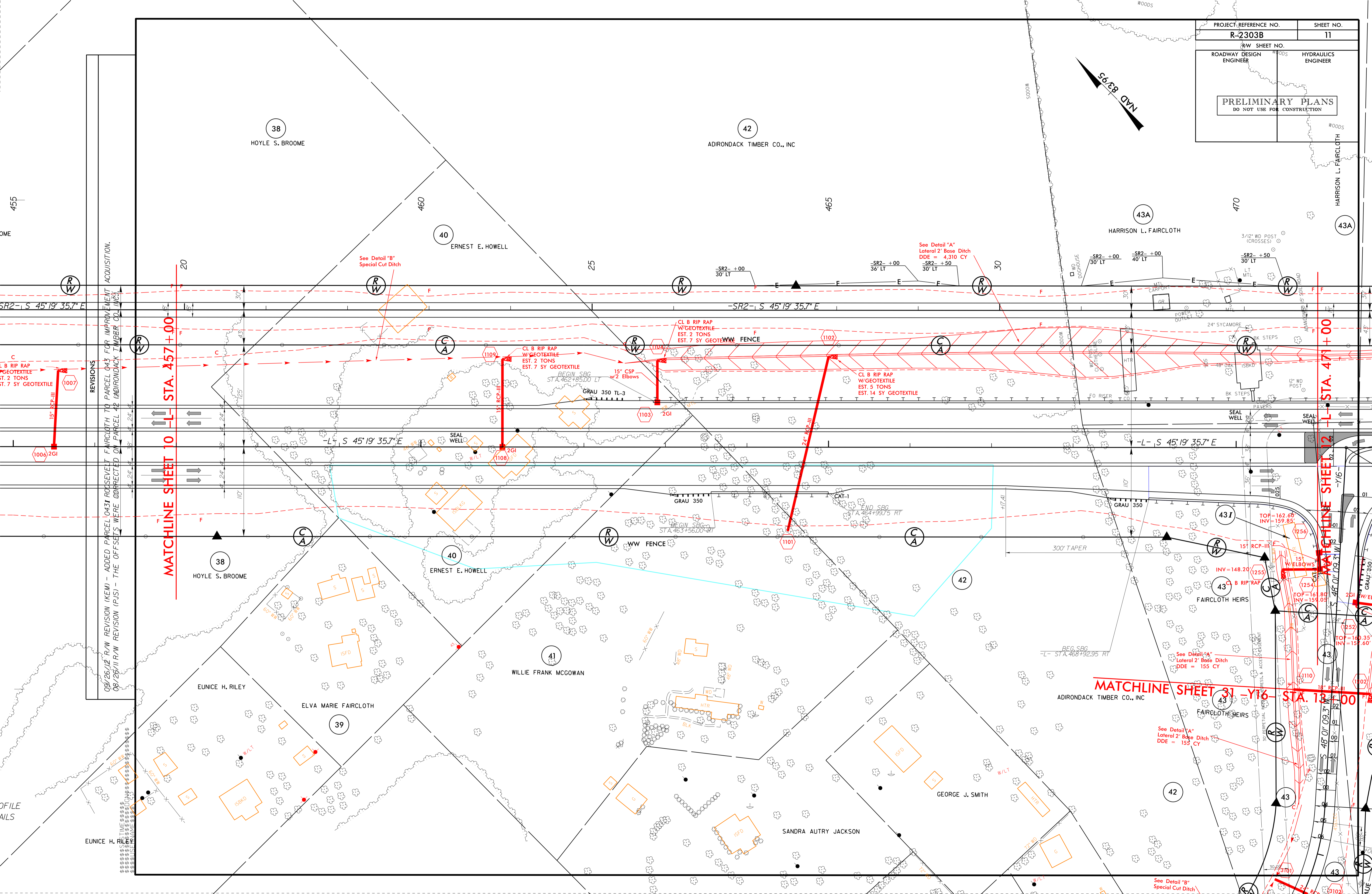
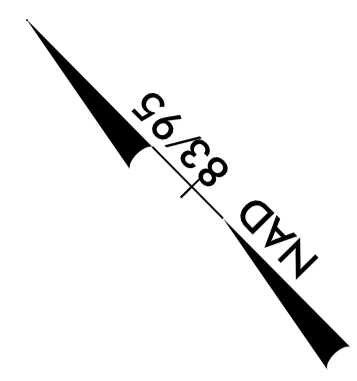


PROJECT REFERENCE NO.	SHEET NO.
R-2303B	11
R/W SHEET NO.	WOODS
ROADWAY DESIGN ENGINEER	HYDRAULICS ENGINEER
PRELIMINARY PLANS DO NOT USE FOR CONSTRUCTION	



REVISIONS  
 09/26/12 R/W REVISION (KEM) - ADDED PARCEL 10431 ROOSEVELT FAIRCLOTH TO PARCEL 043 FOR IMPROVEMENT ACQUISITION.  
 08/26/11 R/W REVISION (PJS) - THE OFFSETS WERE CORRECTED ON PARCEL 42 ADIRONACK TIMBER CO., INC.

MATCHLINE SHEET 10 - STA. 457+00

MATCHLINE SHEET 12 - STA. 471+00

MATCHLINE SHEET 31 - Y16 - STA. 12+00

See Detail "A"  
Lateral 2' Base Ditch  
DDE = 4,310 CY

See Detail "A"  
Lateral 2' Base Ditch  
DDE = 155 CY

See Detail "B"  
Special Cut Ditch

CL B RIP RAP  
W/GEOTEXTILE  
EST. 2 TONS  
EST. 7 SY GEOTEXTILE

CL B RIP RAP  
W/GEOTEXTILE  
EST. 2 TONS  
EST. 7 SY GEOTEXTILE

CL B RIP RAP  
W/GEOTEXTILE  
EST. 5 TONS  
EST. 14 SY GEOTEXTILE

CL B RIP RAP  
W/GEOTEXTILE  
EST. 5 TONS  
EST. 14 SY GEOTEXTILE

CL B RIP RAP  
W/GEOTEXTILE  
EST. 5 TONS  
EST. 14 SY GEOTEXTILE

CL B RIP RAP  
W/GEOTEXTILE  
EST. 5 TONS  
EST. 14 SY GEOTEXTILE

CL B RIP RAP  
W/GEOTEXTILE  
EST. 5 TONS  
EST. 14 SY GEOTEXTILE

CL B RIP RAP  
W/GEOTEXTILE  
EST. 5 TONS  
EST. 14 SY GEOTEXTILE

CL B RIP RAP  
W/GEOTEXTILE  
EST. 5 TONS  
EST. 14 SY GEOTEXTILE

CL B RIP RAP  
W/GEOTEXTILE  
EST. 5 TONS  
EST. 14 SY GEOTEXTILE

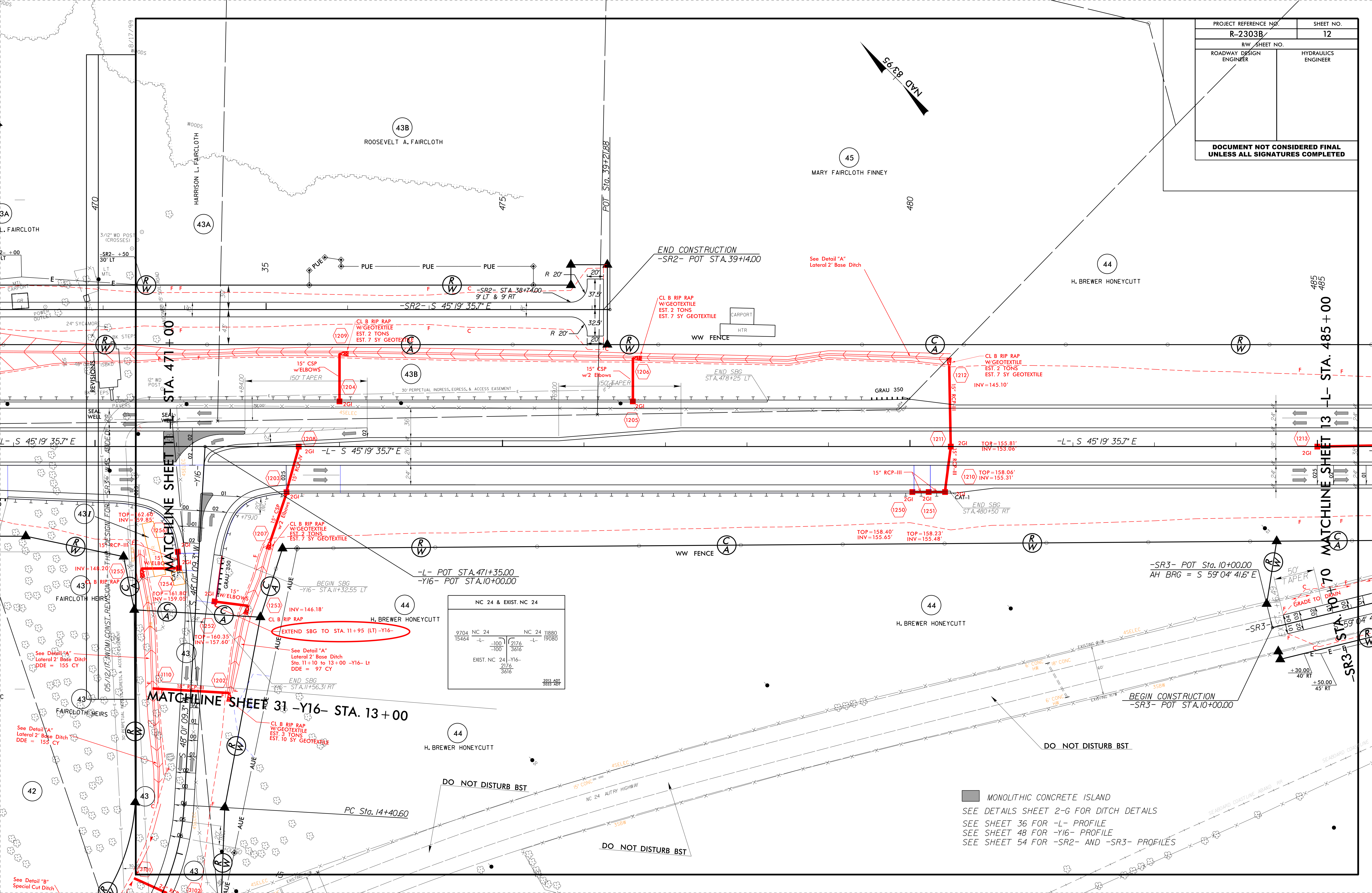
CL B RIP RAP  
W/GEOTEXTILE  
EST. 5 TONS  
EST. 14 SY GEOTEXTILE

CL B RIP RAP  
W/GEOTEXTILE  
EST. 5 TONS  
EST. 14 SY GEOTEXTILE

CL B RIP RAP  
W/GEOTEXTILE  
EST. 5 TONS  
EST. 14 SY GEOTEXTILE

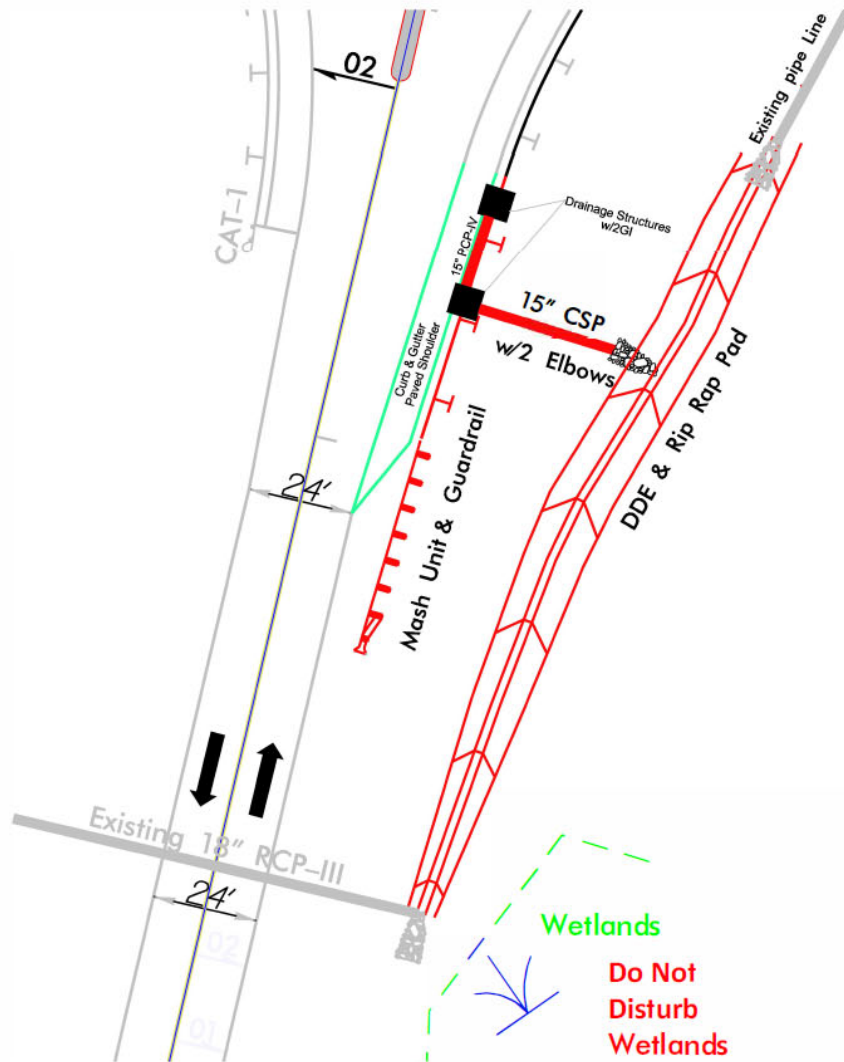
CL B RIP RAP  
W/GEOTEXTILE  
EST. 5 TONS  
EST. 14 SY GEOTEXTILE

PROJECT REFERENCE NO.	SHEET NO.
R-2303B	12
RW SHEET NO.	
ROADWAY DESIGN ENGINEER	HYDRAULICS ENGINEER
<b>DOCUMENT NOT CONSIDERED FINAL UNLESS ALL SIGNATURES COMPLETED</b>	



NC 24 & EXIST. NC 24			
9704 NC 24		NC 24 11880	
15464 -L-	-100'	2176	19080
	-100'	3616	
EXIST. NC 24	-Y16-	2176	
		3616	

■ MONOLITHIC CONCRETE ISLAND  
 SEE DETAILS SHEET 2-G FOR DITCH DETAILS  
 SEE SHEET 36 FOR -L- PROFILE  
 SEE SHEET 48 FOR -Y16- PROFILE  
 SEE SHEET 54 FOR -SR2- AND -SR3- PROFILES



**Location 1**

Autry Hwy (Rt)  
 34.994529, -78.627049

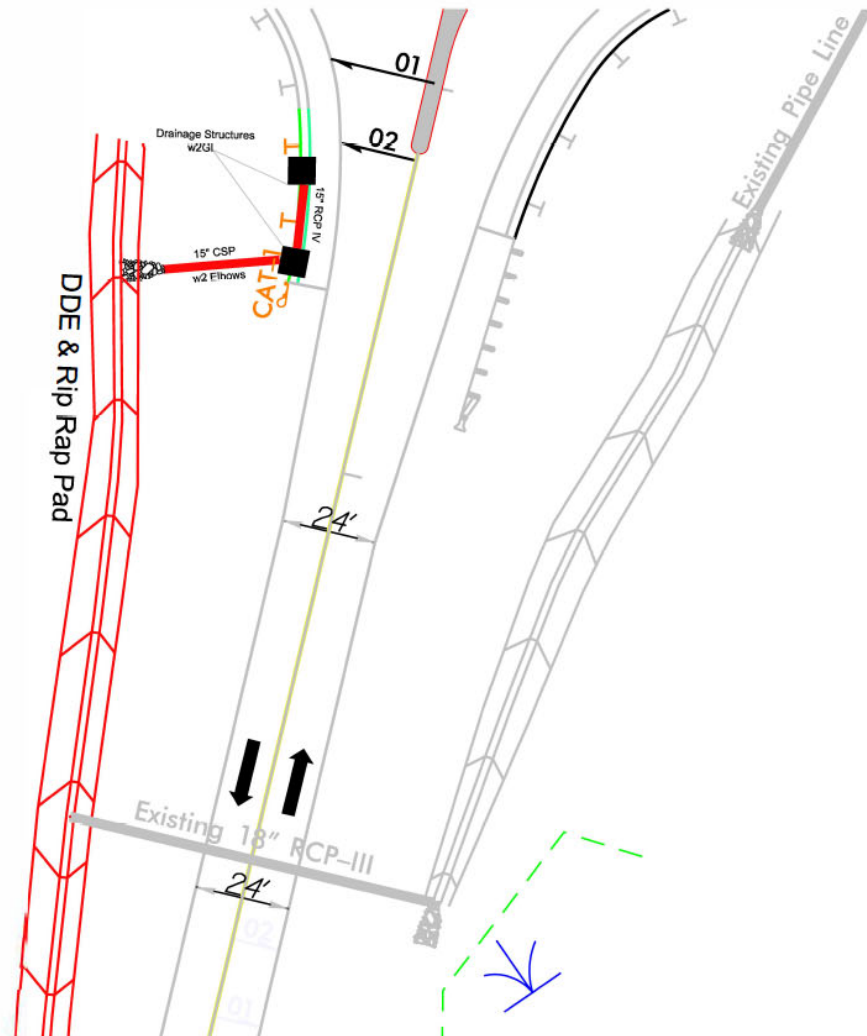
- Proposed:
- 65 cy Drainage Ditch Excavation
  - 62.5' Additional Guardrail
  - 62' Shoulder Berm Gutter
  - 62' Paved Shoulder
  - 32' of CSP w/2 Elbows
  - 2 Drainage Structures w/2GI 840.29
  - 16' RCP Class IV 15"
  - 1 Erosion Rip Rap Pad

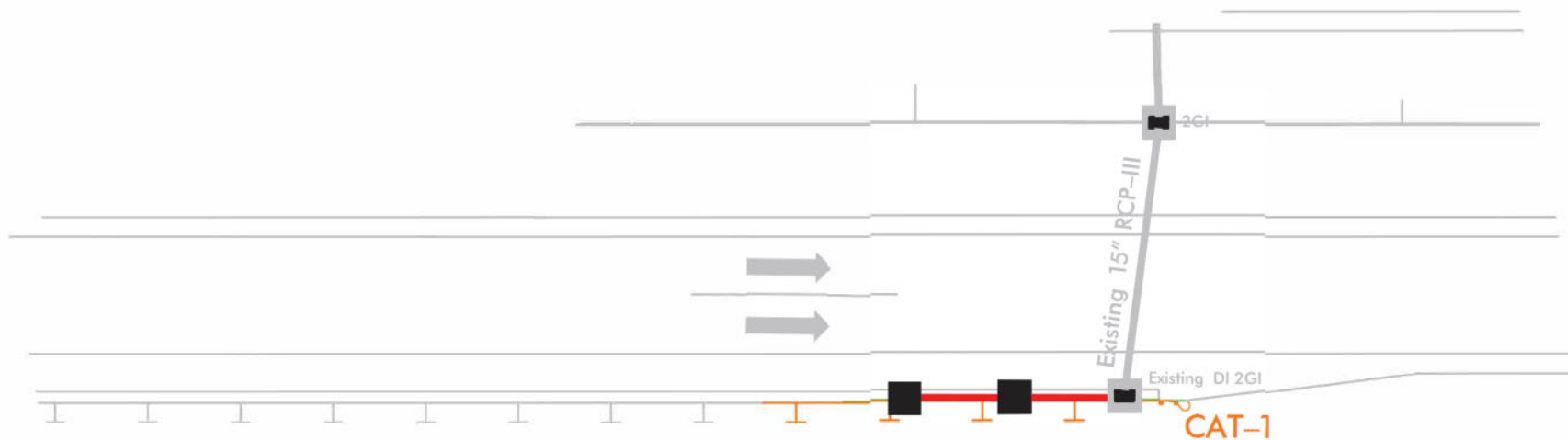
Remove & Replace Guardrail End Unit w/Mash Unit  
 Grade Shoulder to Accommodate Guardrail  
 Grade & Remove Existing Rock from Slope  
 Install Erosion Control as Directed by the Engineer

**Location 2**

Autry Hwy (Lt)  
34.994515, -78.627207

- Proposed:
- 85 cy Drainage Ditch Excavation
  - 30' Shoulder Berm Gutter
  - 32' of CSP w2 Elbows 15"
  - 2 Drainage Structures w/2GI 840.29
  - 16' RCP Class IV 15"
  - 1 Erosion Rip Rap Pad
- Remove & Reset Guardrail  
Remove & Reset Guardrail End Unit  
Grade & Remove Existing Rock from Slope  
Install Erosion Control as Directed by the Engineer



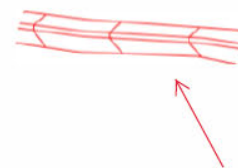


**Location 3**

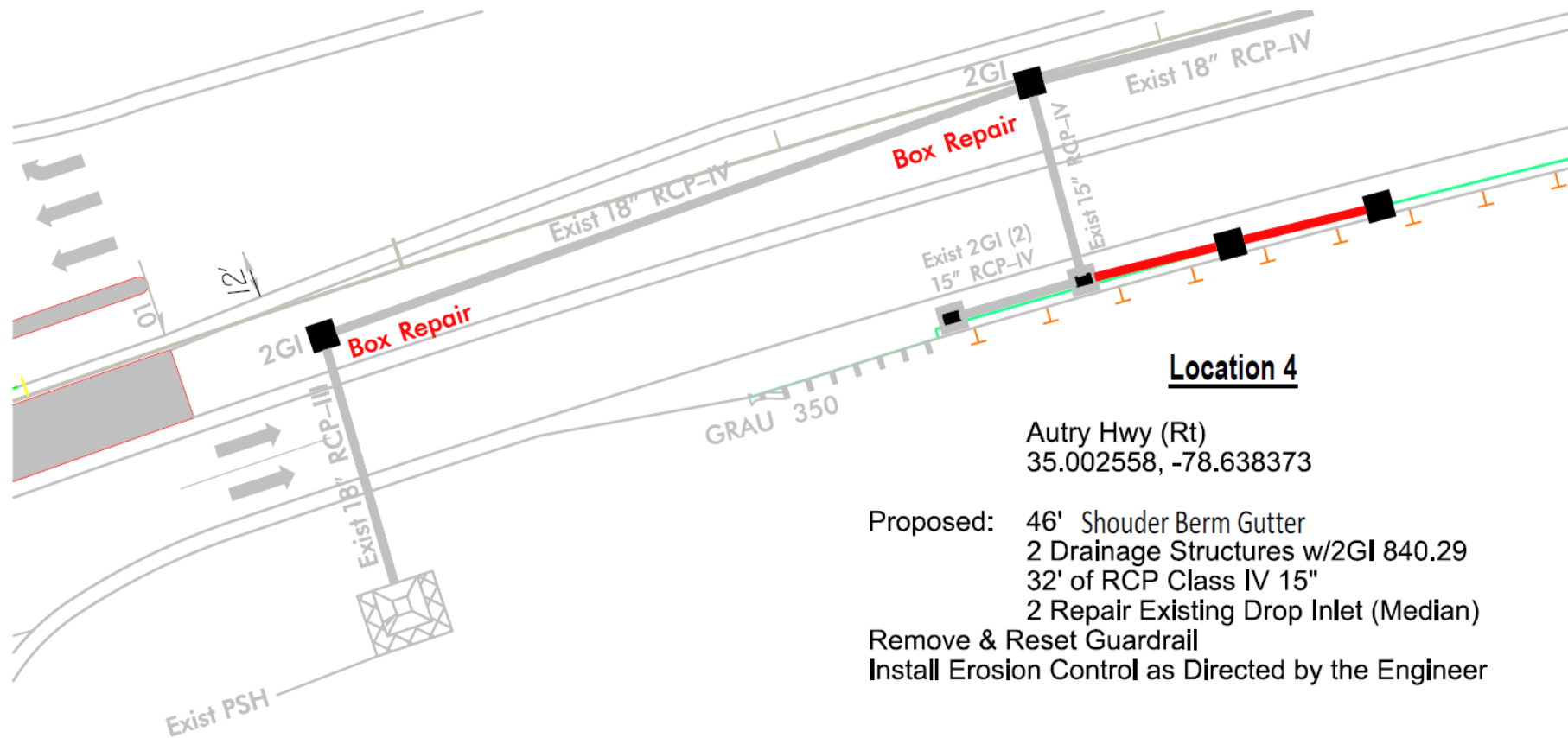
NC-24 East Project 1  
 34.992959, -78.624798

Proposed: 46' Shoulder Berm Gutter  
 2 Drainage Structures w/2GI 840.29  
 32' RCP Class IV 15"  
 60 cy Drainage Ditch Excavation

Remove & Reset Guardrail  
 Remove & Reset Guardrail End Unit  
 Grade & Remove Existing Rock from Slope Install Erosion  
 Control as Directed by the Engineer



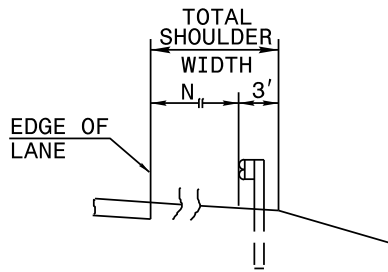
Remove Material from Ditch at toe of slope &  
 Grade to Drain (Approx. 100 LF) Payment will be  
 Drainage Ditch Excavation (CY)



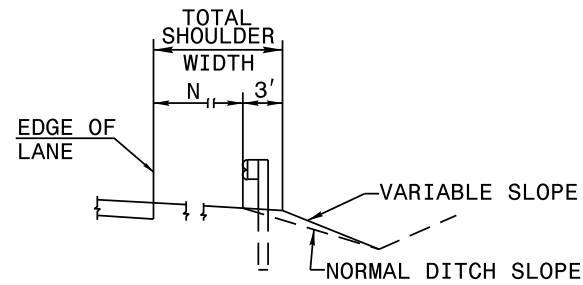
**Location 4**

Autry Hwy (Rt)  
 35.002558, -78.638373

- Proposed: 46' Shoulder Berm Gutter
- 2 Drainage Structures w/2GI 840.29
- 32' of RCP Class IV 15"
- 2 Repair Existing Drop Inlet (Median)
- Remove & Reset Guardrail
- Install Erosion Control as Directed by the Engineer

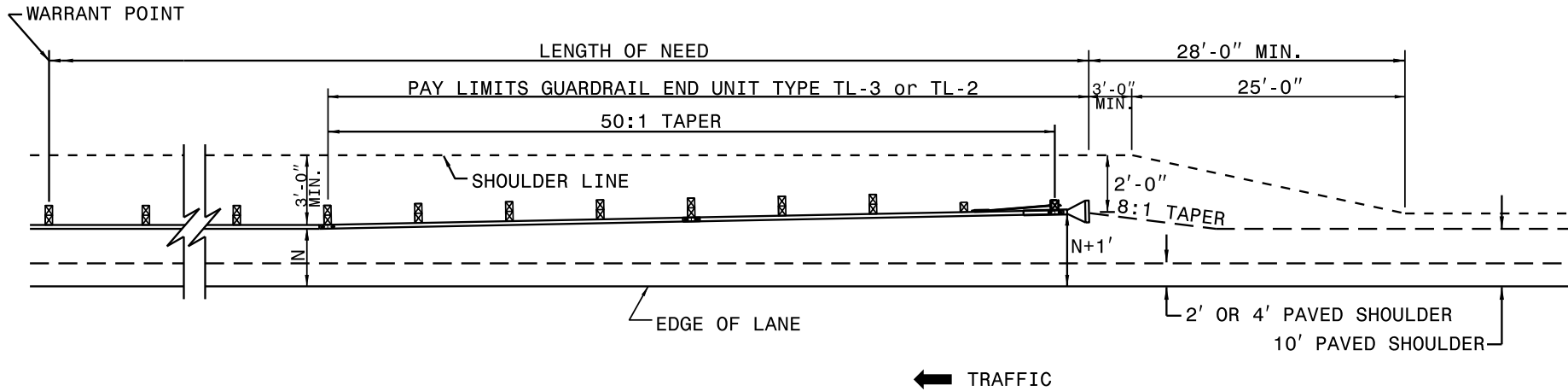


**FILL SECTION**



**CUT SECTION**

"N" = DISTANCE FROM EDGE OF LANE TO FACE OF GUARDRAIL WHERE GUARDRAIL IS PARALLEL TO LANE.



FOR POSTED SPEEDS  $\geq$  45mph USE GREU TYPE TL-3  
 FOR POSTED SPEEDS  $<$  45mph USE GREU TYPE TL-2

**DETAIL OF BEGINNING OF GUARDRAIL IN CUT OR FILL SECTION**

PROJECT NO.	SHEET NO.	TOTAL NO.
NC-24 Drainage		

**SUMMARY OF QUANTITIES**

PROJECT NO	COUNTY	MAP NO	ROUTE	DESCRIPTION	TYP NO	LANES	LANE TYPE	LENGTH	WIDTH	GRADING	0063000000-N	0106000000-E	0134000000-E	0448200000-E	0582000000-E	0636000000-E	1491000000-E	1523000000-E	2275000000-E	2286000000-N	2308000000-E	2367000000-N	2473000000-N	2473000000-N	2556000000-E						
											BORROW EXCAVATION	DRAINAGE DITCH EXCAVATION	15" KC PIPE CULVERTS, CLASS IV	15" CS PIPE CULVERTS, 0.064" THICK	15" CS PIPE ELBOWS, 0.064" THICK	BASE COURSE, B25.0C	SURFACE COURSE, SS.5C	FLOWABLE FILL	MASONRY DRAINAGE STRUCTURES	MASONRY DRAINAGE STRUCTURES (EXTRA DEPTH)	FRAME WITH TWO GRATES, STD 840.29	GENERIC DRAINAGE ITEM (DRAINAGE STRUCTURE REPAIR)	REMOVE & REPLACE CONC APRON FOR DROP INLET	SHOULDER BERM GUTTER							
MI	FT	LS	CY	CY	LF	LF	EA	TONS	TON	CY	EA	EA	EA	EA	EA	EA	EA	EA	EA	EA	EA	EA	EA	EA	EA	EA					
34416.3.4	Sampson	1	AUTRY HWY LT	34.994515, -78.627207	1	2	ZWU	0.038	12	0.25	80	85	16.00	32.00	2.00					2.00		2.00									
<b>TOTAL FOR MAP NO. 1</b>								0.038		0.25	80	85	16.00	32.00	2.00					2.00		2.00					30				
34416.3.4	Sampson	2	AUTRY HWY RT	34.994529, -78.627049	1	2	ZWU	0.038	12	0.25	80	65	16.00	32.00	2.00	25	10			2.00		2.00									
<b>TOTAL FOR MAP NO. 2</b>								0.038		0.25	80	65	16.00	32.00	2.00	25	10					2.00		2.00					62		
34416.3.4	Sampson	3	NC 24 EAST PROJ1	34.992959, -78.624798	1	2	ZWU	0.009	12	0.25	80	60	32.00							2.00		2.00									
<b>TOTAL FOR MAP NO. 3</b>								0.009		0.25	80	60	32.00									2.00		2.00					46		
34416.3.4	Sampson	4	NC 24 EAST PROJ2	35.002558, -78.638373	1	2	ZWU	0.009	12	0.25	60		32.00						4	2.00	4.00	2.00	2.00	1.00							
<b>TOTAL FOR MAP NO. 4</b>								0.009		0.25	60		32.00							4	2.00	4.00	2.00	2.00	1.00				46		
<b>TOTAL FOR PROJ NO. NC 24 Drainage</b>								0.094		1.00	300	210	96.00	64.00	4.00	25	10	4	8.00	4.00	8.00	8.00	2.00	1.00						184	
<b>GRAND TOTAL</b>								0.094		1.00	300.00	210.00	96.00	64.00	4.00	25.00	10.00	4.00	8.00	4.00	8.00	8.00	2.00	1.00							184.00

PROJECT NO	COUNTY	MAP NO	ROUTE	DESCRIPTION	TYP NO	LANES	LANE TYPE	LENGTH	WIDTH	3030000000-E	3287000000-N	3420000000-E	3435000000-N	6009000000-E	6009000000-E	6036000000-E	6071010000-E	6084000000-E	6102000000-E	6105000000-E	6117000000-N	6622000000-E	4508000000-E	4457000000-N	4507000000-E				
										STEEL BM GUARDRAIL	GUARDRAIL END UNITS, TYPE TL-3	REMOVE & RESET EXISTING GUARDRAIL (GENERIC)	REMOVE & RESET EXISTING END UNIT	TEMPORARY SALT FENCE	STONE FOR EC CLASS B	MATTING FOR EROSION CONTROL	WATTLE	SEED & MULCHING	SODDING	WATER	RESPONSE FOR EROSION CONTROL	GEOTEXTILE FOR DRAINAGE	TEMPORARY TRAFFIC CONTROL	WATER FILLED BARRIER	REMOVE & RESET WATER FILLED BARRIER				
MI	FT	LF	EA	EA	LF	TON	SY	LF	AC	SY	M/G	EA	SY	LS	LF	LF													
34416.3.4	Sampson	1	AUTRY HWY LT	34.994515, -78.627207	1	2	ZWU	0.038	12			25.00	1.00	150	2	400	40	0.20	80		1	7	0.25	200					
<b>TOTAL FOR MAP NO. 1</b>								0.038				25.00	1.00	150	2	400	40	0.20	80		1	7	0.25	200					
34416.3.4	Sampson	2	AUTRY HWY RT	34.994529, -78.627049	1	2	ZWU	0.038	12	62.50	1.00			150	2	400	40	0.20	185		1	7	0.25	150					
<b>TOTAL FOR MAP NO. 2</b>								0.038		62.50	1.00			150	2	400	40	0.20	185		1	7	0.25	150					
34416.3.4	Sampson	3	NC 24 EAST PROJ1	34.992959, -78.624798	1	2	ZWU	0.009	12			50.00	1.00	120		180	40	0.10	195		1		0.25	200					
<b>TOTAL FOR MAP NO. 3</b>								0.009				50.00	1.00	120		180	40	0.10	195		1		0.25	200					
34416.3.4	Sampson	4	NC 24 EAST PROJ2	35.002558, -78.638373	1	2	ZWU	0.009	12			50.00		120		80	40	0.10	55	3	1		0.25	200					
<b>TOTAL FOR MAP NO. 4</b>								0.009				50.00		120		80	40	0.10	55	3	1		0.25	200					
<b>TOTAL FOR PROJ NO. NC 24 Drainage</b>								0.094		62.50	1.00	125.00	2.00	540	4	1,060	160	0.60	515	3	4	14	1		1.00	200.00			550
<b>GRAND TOTAL</b>								0.094		62.50	1.00	125.00	2.00	540.00	4.00	1060.00	160.00	0.60	515.00	3.00	4.00	14.00	1.00		200.00			550.00	